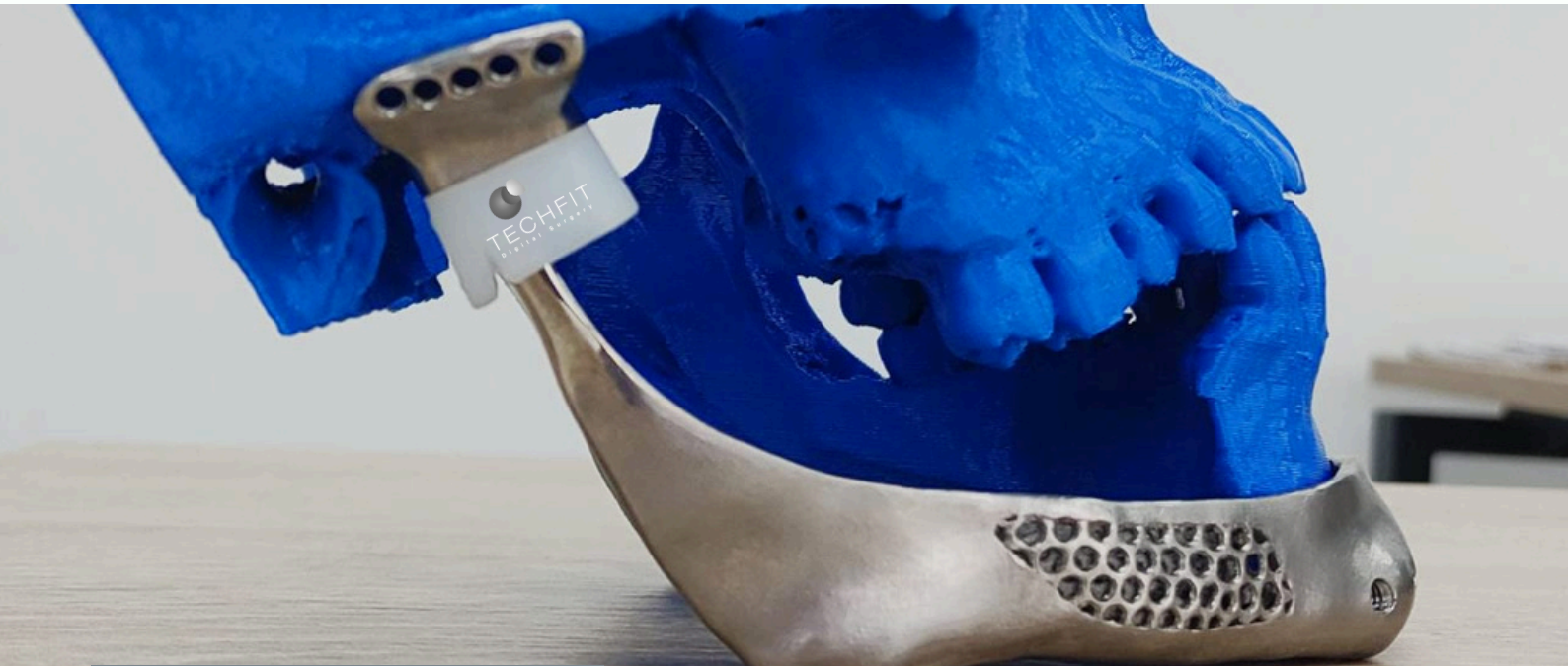


TEMPOROMANDIBULAR JOINT (TMJ)

Patient-Specific solutions for TMJ Replacement



DIGITAL PLANNING SESSION

Techfit Digital Surgery planning session will support surgeons in the decision making process of TMJ replacement, including 3D cephalometric analysis, patient-reported outcomes of a full digital workflow

MEETING PATIENT'S SPECIFIC NEEDS

Techfit Digital Surgery

We provide tailored solutions for orthognathic surgery, ensuring greater surgical precision, reduced time, and improved outcomes. Access advanced surgical planning, instrumentation, and custom implants designed for each patient's unique needs.

TECHFIT Maxillofacial Implants are custom single-use medical devices

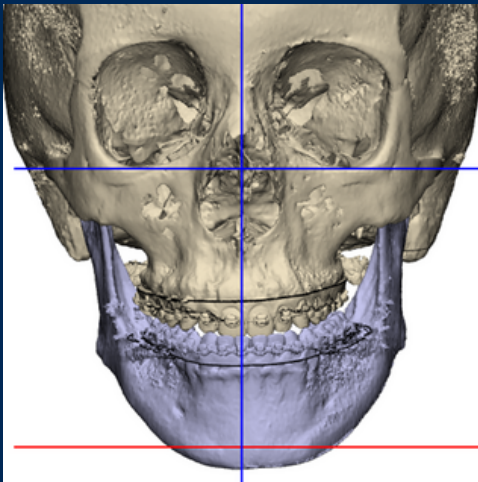


DIGITAL PLANNING

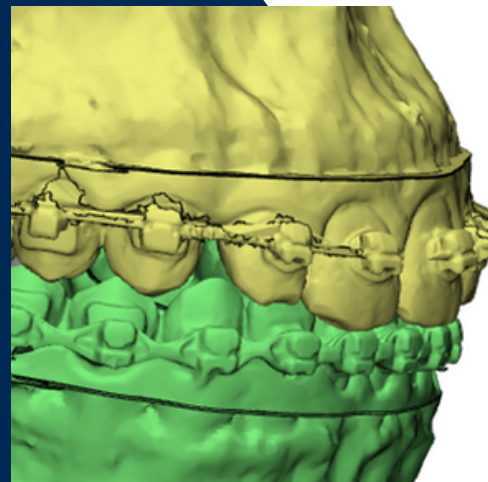
Cloud-Based Collaboration for Surgical Planning and Simulation



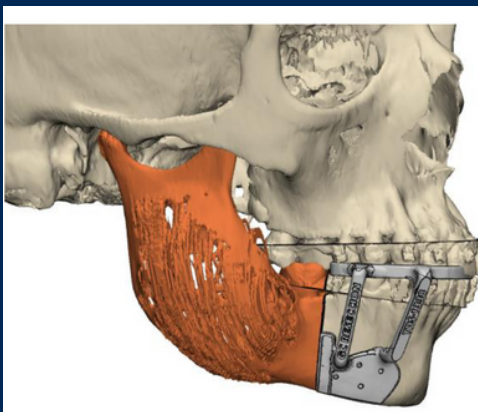
Digitally Integrated
Surgical Reconstruction Platform



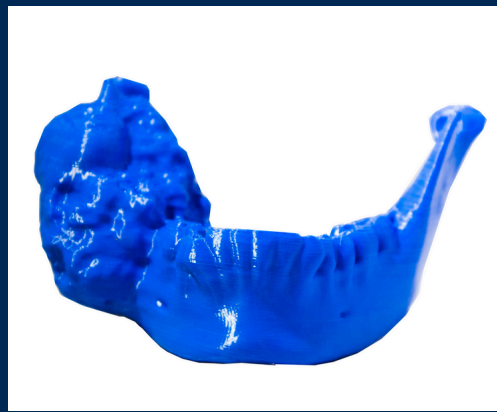
3D Cephalometric analysis



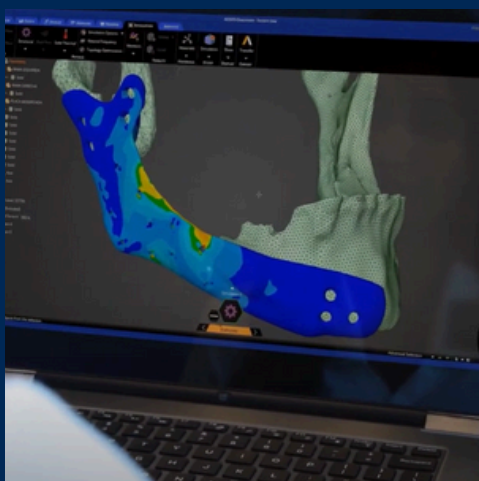
Virtual Occlusion



Digital Osteotomies



3D printed anatomic models



FEA Analysis

Surgeon Validation

Approve Design

Approved design to start manufacturing

Uses:

TECHFIT Patient Specific Temporomandibular Joint (TMJ) prosthesis is intended to replace the head of the mandibular condyle and the glenoid fossa, providing a total replacement of the temporomandibular joint.

The devices are manufactured based on medical imaging (CT scan) of the patient's anatomy with input from the physician during virtual planning and prior to finalization and production of the device

Solution includes:

- Digital planning session
- Virtual Osteotomies
- Surgical guides
- Mandibular component
- Temporal component
- Anatomic model

Materials

Temporal component

Assembly of titanium 6Al-4V ELI alloy (ASTM F136) and Ultra-High Molecular Weight Polyethylene (UHMWPE) (ASTM F2759)

Mandibular component

Titanium 6Al-4V ELI alloy (ASTM F136)

TECHFIT Surgical Guides

Medical-grade 3D printing Resin





Find us:

TECHFIT HQ
TECHFIT Digital Surgery
1511 Aviation Center Pkwy
Suite 220H
Daytona Beach, FL 32114
United States

Follow us:

www.techfit-ds.com

