

CUSPID® IMPLANTS

Custom-made solutions for Subperiosteal Reconstruction



DIGITAL PLANNING SESSION

Techfit Digital Surgery planning session will support surgeons in the decision making process of Subperiosteal implants for dental rehabilitation, including 3D cephalometric analysis, patient-reported outcomes of a full digital workflow

***Not FDA Cleared**

COST EFFECTIVE SOLUTION

Techfit Digital Surgery

TECHFIT solutions provide procedural support for facial reconstruction through:

- Preoperative visualization of the patient's anatomy and condition
- Digital simulation and optimization of osteotomies and facial reconstructions
- Improved communication between the patient and the surgery team
- Comparison of the preoperative plan and postoperative results
- 3D printed anatomical guides
- Custom made plates for fixation

TECHFIT Maxillofacial Implants are custom single-use medical devices

DIGITAL PLANNING

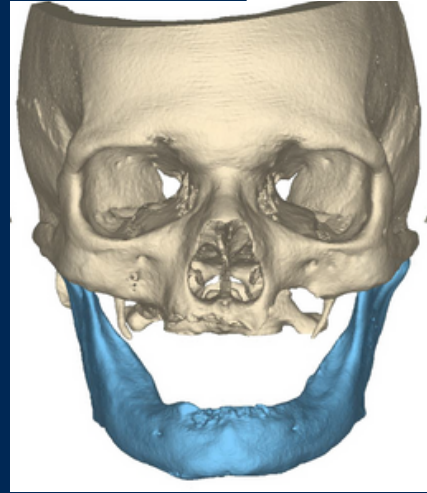
Cloud-Based Collaboration for Surgical Planning and Simulation



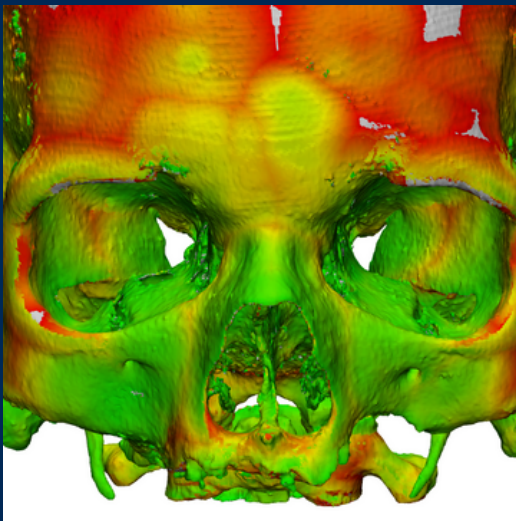
Digitally Integrated
Surgical Reconstruction Platform



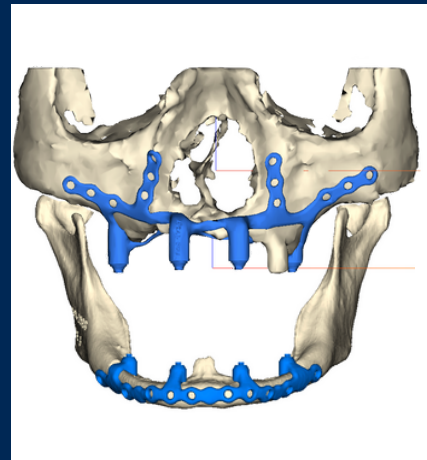
Upload files to DISRP



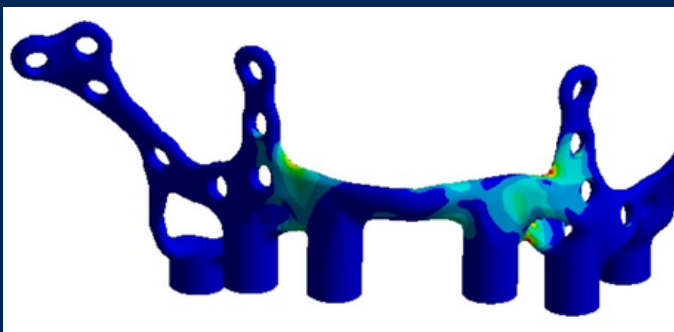
3D view Initial condition



Bone tissue review



Design Proposal



FEA Analysis

Surgeon Validation

Approve Design

Approved design to
start manufacturing

Uses:

TECHFIT Patient-Specific CUSPID implants are designed specifically for the patient's individual needs, ensuring a perfect fit. This means that the implant will be more stable, comfortable and less likely to cause complications such as implant failure or rejection.

The devices are manufactured based on medical imaging (CT scan) of the patient's anatomy with input from the physician during virtual planning and prior to finalization and production of the device

Solution includes:

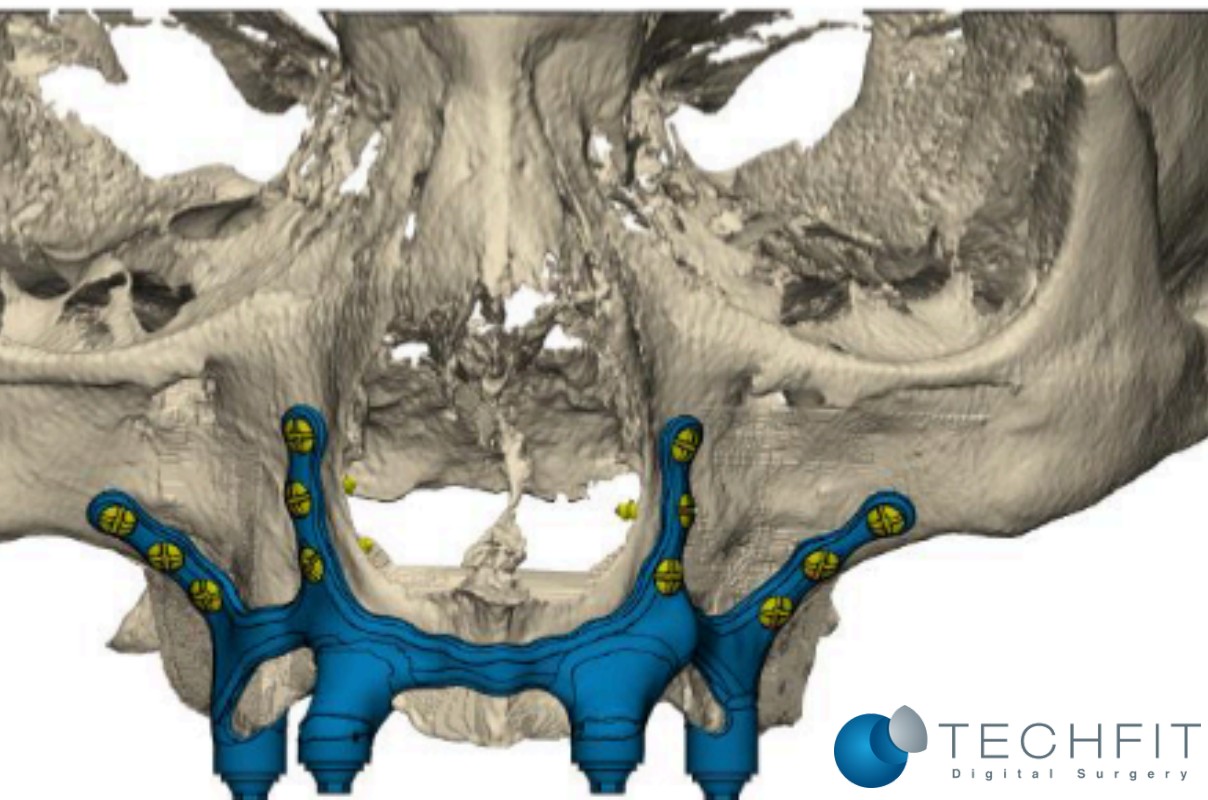
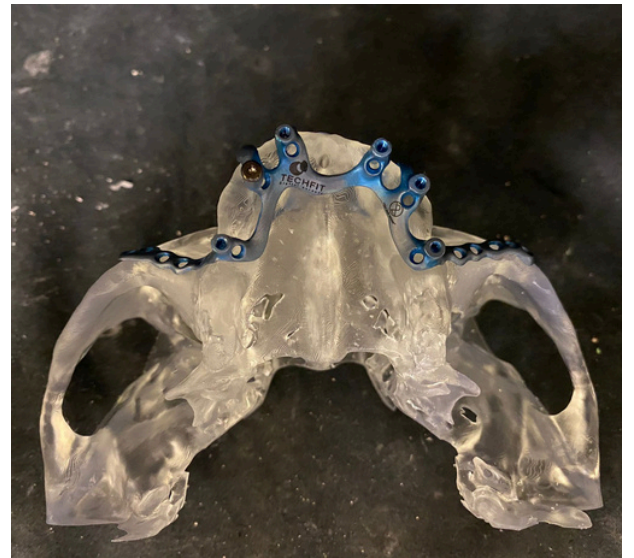
Digital planning session
Virtual Osteotomies
surgical guides when needed
Patient-Specific implant
Anatomic model

Materials

Patient-Specific Maxillary Implant Subperiosteal are manufactured in Titanium 6Al-4V ELI alloy (ASTM F136)

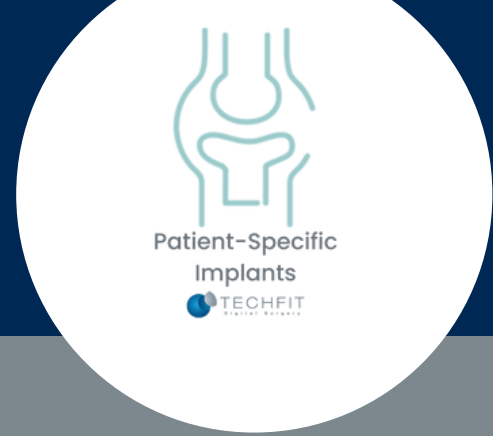
TECHFIT Surgical Guides

Medical-grade 3D printing Resin

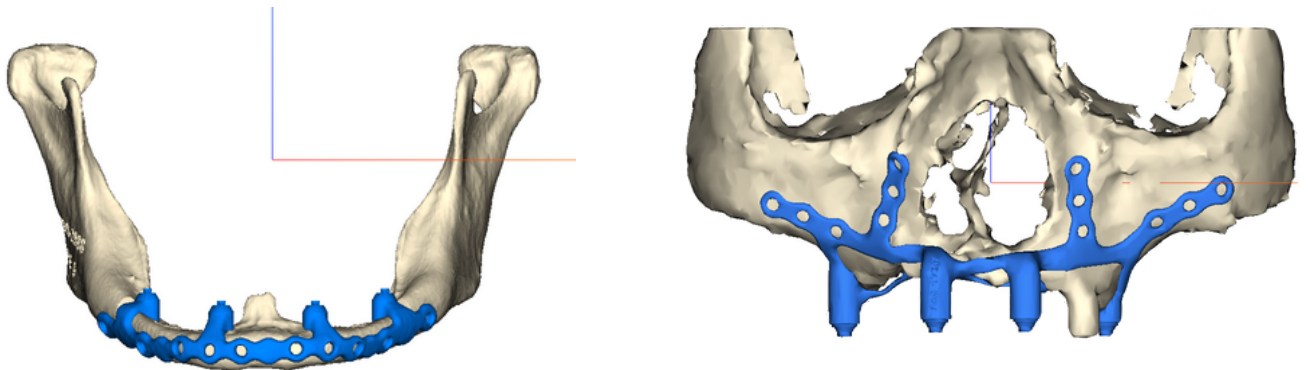


A SOLUTION FOR EACH PATIENT

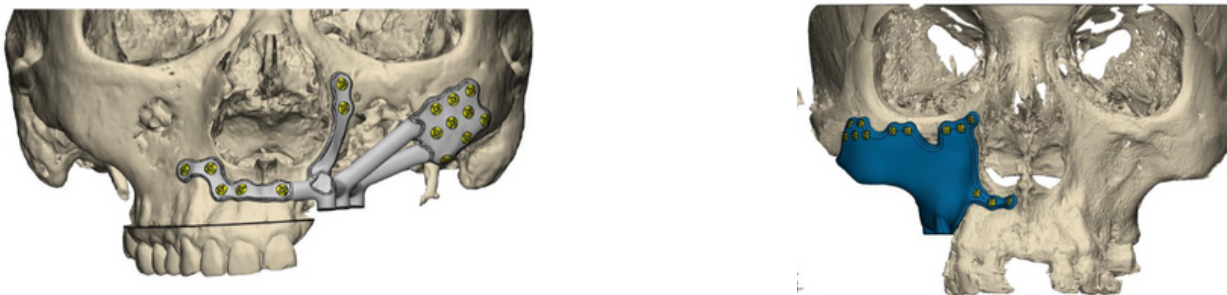
Treatment for severe alveolar ridge atrophy



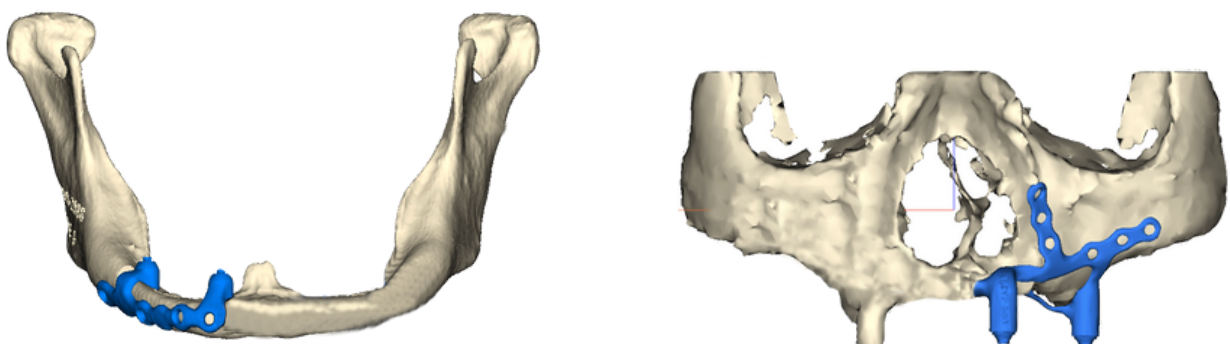
Cuspid - Two quadrants



Cuspid + MidFace Reconstruction



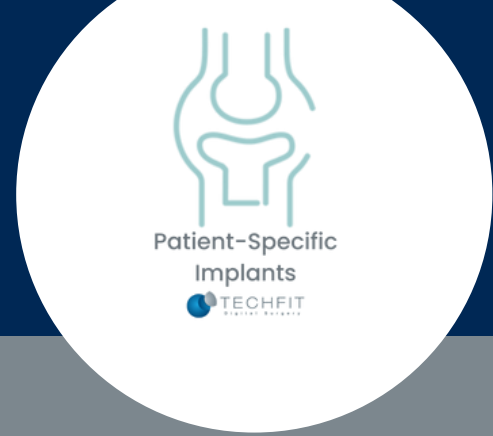
Cuspid - One Quadrant



*Not FDA Cleared

IMPORTANT

Please consider the following information for each case



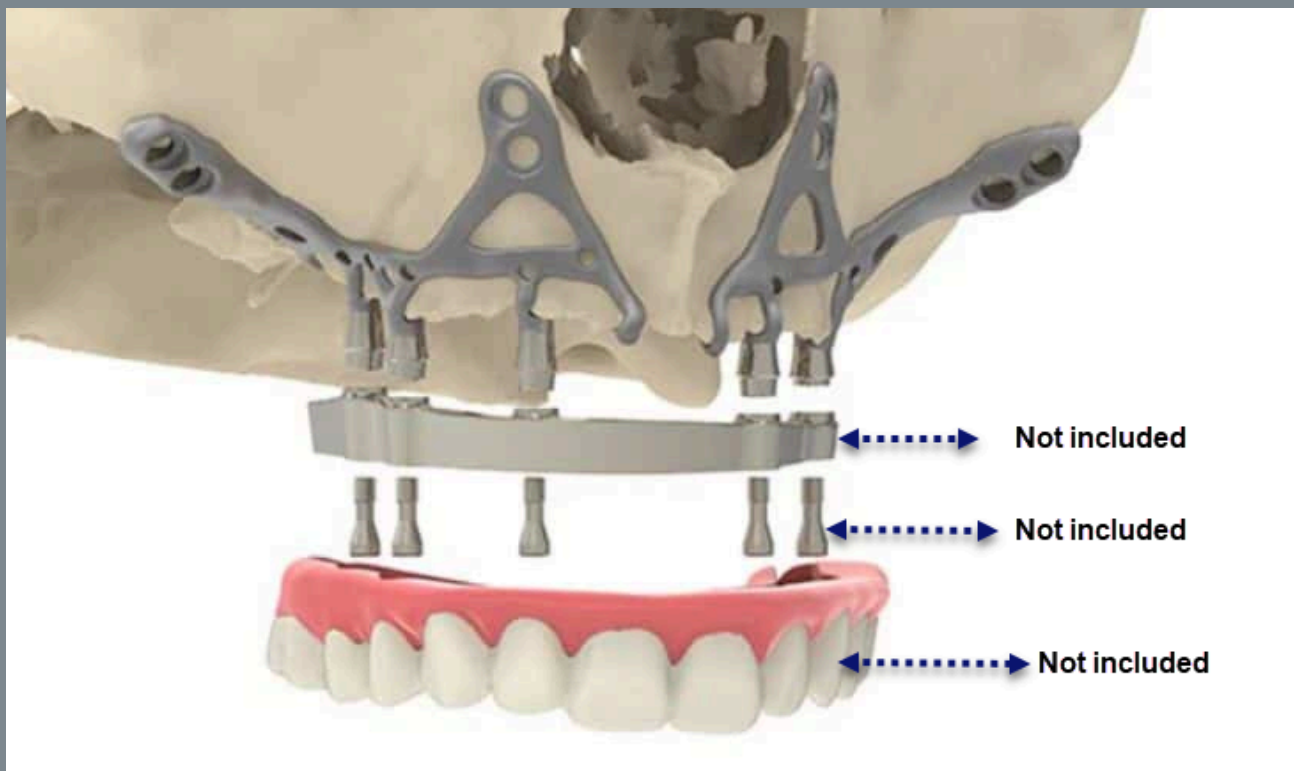
Before the planning meeting.

- Complete all the details in DISRP
- Inform TECHFIT about the abutment brand to be used
- When requested by TECHFIT, send the abutment physical sample

Fixation system is not provided by TECHFIT. Please confirm with your local distributor or hospital



The TECHFIT Cuspid solutions for the maxilla and mandible are patient-specific to each patient's needs. However, it's important to note that any additional accessories necessary for the treatment must be provided by the customer.





Find us:

TECHFIT HQ
TECHFIT Digital Surgery
1511 Aviation Center Pkwy
Suite 220H
Daytona Beach, FL 32114
United States

Follow us:

www.techfit-ds.com

